



SADDLEWORTH

Parish Council



News & Views September 2010



SADDLEWORTH

Parish Council



Home

About Us

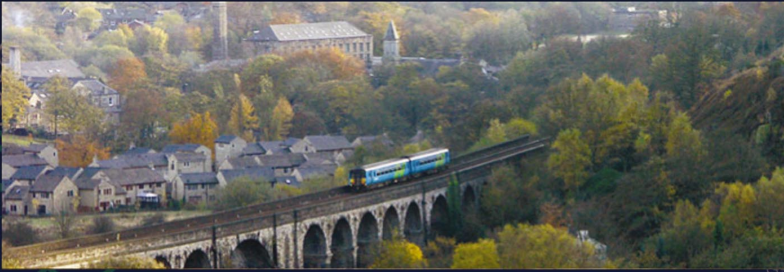
Publications

Meetings

Tourist
Information

Events

Contact



- Dobcross Village
- Uppermill Canal
- Dovestone Reservoir
- Saddleworth Viaduct**
- Whit Friday Walks
- Greenfield Station
- Rushcart
- Saddleworth from Stanedge
- Saddleworth Church

Working with us:

Oldham MB Council
Saddleworth & Lees District
Partnership
Peak District National Park
Pennine Prospects
RSPB
Groundwork
Neighbourhood Police Team
NHS Oldham

Saddleworth Parish Council

Saddleworth Parish Council is the administrative body for the area of Saddleworth which is made up of the villages of Austerlands, Delph, Denshaw, Diggle, Dobcross, Friezland, Grasscroft, Greenfield, Grotton, Lydgate, Scouthead, Springhead and Uppermill.

The Council is made up of elected representatives from each village or locality and its main aim is to promote, maintain and improve Saddleworth for the benefit of its residents and visitors.

Quality That Counts



QUALITY
PARISH
COUNCIL

In June 2005 the Parish Council attained Quality Parish Council Status. This means that the Parish Council, in co-operation with Oldham MBC, would be allowed to consider taking over some of the

www.saddleworthparishcouncil.org.uk

This is the address of our new and informative website which has been developed over the past 12 months with Cornerstone Design and Marketing from Lees.

It contains:

Minutes and agendas for all Parish meetings.

Details of the Parish Councillors and how to contact them.

Events taking place in Saddleworth.

Tourist Information including the Saddleworth Hopper timetable and accommodation.

Parish publications such as the Parish Flyer and the Parish Plan.

Links to partner websites.

And much more

Said Parish Council Chairman Cllr Keith Begley 'We must thank David for his patience and his persistence in handling our many and varied requests during our meetings. We are extremely pleased with the result and like all good websites it will evolve and expand over time'.

www.saddleworthparishcouncil.org.uk



Charity Reg. No. 1096422

'Life for a Life'™ Memorial Forests

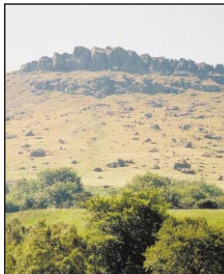
**Love Someone, Miss Someone, Help Everyone,
Plant a Tree - It's for Life**

'Life for a Life' is a charity that offers you the chance to Celebrate or Commemorate your loved ones by planting memorial trees and installing memorial benches in one of thirty woodland locations across the United Kingdom.

Planting a new tree, or installing a bench or plaque helps people to come to terms with their loss and creates a special place for friends and family to visit and to remember and reflect. Alternatively, a tree can be planted to celebrate a new life, a wedding, anniversary or other major event. After your tree planting, you will be issued with a lovely certificate.



Queen Mothers Meadow, Stinesdale



Dovestones, Indian's Head



Salmon Fields Meadow

'Life for a Life' is proud to be a **NOT FOR PROFIT, NON-DENOMINATIONAL** registered Charity, that makes regular quarterly donations to 22 hospices, throughout the United Kingdom, 4 of which are for terminally ill children under the age of 16. Financial support is also extended to The Royal British Legion and S.S.A.F.A.

For further information and a **FREE fully comprehensive information pack** please contact us on:-

0161 624 2299

Or visit our website at

www.lifeforlife.org.uk



Dr Kershaw's Hospice



Bury Hospice

St. JOHN'S
HOSPICE



SSAFA
FORCES
Help



Derian
House
Children's Hospice



THE ROYAL
LEGION

And many more hospices and health related charities throughout the United kingdom including many in Oldham

My Year As Chairman 2009/10



Councillor Mrs. Alma McInnes handing over the Chain of Office to the New Chairman for 2010-2011 Councillor Mr. Keith Begley.

I commenced my second term of office in May 2009 as Chairman of Saddleworth Parish Council and looked forward to a year of meetings, functions, visits, events and fundraising.

A number of on-going projects for the residents and visitors of and to Saddleworth have been foremost in our work this past year. The new website, the experimental Saddleworth Hopper, the Community Toilet Scheme are all now up and running and the most important, Phase 2 upgrading of the Civic Hall, which after nearly two

years will hopefully soon come to fruition, I am very proud that as the Chairman of the Civic Hall Sub-committee this has very much been my baby.

The Civic Hall is used practically every day of the year and a list of the users will be posted on the new Saddleworth Parish Council website.

Ian, my consort and husband wrote an excellent diary in the Saddleworth Monthly informing people of our many activities during the year.

Some highlights are my Civic Sunday, a glorious day with many Chains attending including the Mayor and Mayoress of Oldham. We were led by Diggle Band and after the service, a buffet was provided by the Charity Committee and my family. The Village Olympics – such enthusiasm by the children taking part and the organisers. The Saddleworth in Bloom Competition, and the Christmas Lights Competition which sadly had to be cancelled due to the atrocious weather. The hard work done in renovating the garden on Smithy Lane, by Uppermill Methodist Church Scout Group. The Civic Ball again brought out ‘the Chains’ from the various towns and parishes and was also attended by friends old and new and the Volunteer of Saddleworth, won by Kath and John Angove, who do so much for the community. The concerts we attended showed us so much talent we have in the area.

Ian and I had a wonderful year, raising £22,000 for our chosen charities. This could not have happened without the hard work of the Chairman’s Charity Committee. Our two main charities were MacMillan Cancer Support and Myasthenia Gravis, but with the generous support of Uppermill Methodist Church, who gave both financial and practical support and the support of the public, we were able to help in total 23 local charities.

Finally, my thanks to the Revd. Paul Stringer, my Chaplain, and Margaret his wife, who supported me spiritually and provided me with shoulders to lean on when needed.

Ian and I hope Councillor Keith Begley and Mrs. Jenny Begley enjoy their year as much as we did.

Your Parish Council

The Parish Council has 20 elected Members of the Council, who are elected into office for a period of four years. The last Parish Council elections were in May 2007.

Chairman of the Council 2010 – 2011
Vice Chairman

Councillor Mr. Keith Begley
Councillor Mr. Bill Cullen

DELPH WARD (Delph & Denshaw)

Councillor Mr. Keith Begley	01457 874539	delphkeith@gmail.com
Councillor Mr. Ken Hulme	01457 872859	ken@councillorkenhulme.co.uk
Councillor Mr. Phil Renold	01457 873657	philip@renoldok.freeserve.co.uk

DOBCROSS WARD (Dobcross & Diggle)

Councillor Mr. Philip Davenport	01457 876881	philip.h.davenport@btinternet.com
Councillor Mr. Royce Franklin	01457 873248	royce.franklin1@btinternet.com
Councillor Mrs. Dorothy Shaw	01457 872096	tony@saddleshworthparishcouncil.org.uk

GREENFIELD WARD (Greenfield, Grasscroft & Lydgate)

Councillor Dr. David Atherton	01457 874639	dr.david@virgin.net
Councillor Mr. Philip Bagley	01457 872778	margaretbagley@btinternet.com
Councillor Mrs. Mavis Bingley	01457 870670	tony@saddleshworthparishcouncil.org.uk
Councillor Mr. John Hudson	01457 873518	john.hudson@oldham.gov.uk
Councillor Mrs. Anne Parry	01457 873751	tony@saddleshworthparishcouncil.org.uk

SPRINGHEAD HIGHER WARD (Austerlands, Scouthead & Higher Springhead)

Councillor Mr. Mike Buckley	01457 820015	mikebuckley@saddleshworth.net
Councillor Mr. Derek Heffernan	0161 652 3705	derek.heffernan@oldham.gov.uk

SPRINGHEAD LOWER WARD (Lower Springhead & Grotton)

Councillor Mrs. Barbara Beeley	0161 652 0930	barbara.beeley@oldham.gov.uk
Councillor Mr. Bill Cullen	0161 626 7625	wacullen@btinternet.com
Councillor Mr. Andrew Hodgkiss	0161 633 7296	susan@hodgkiss11a.wanadoo.co.uk
Councillor Mrs. Pat Lord	0161 633 4519	patricia.lord@talktalk.net
Councillor Mr. Brian Lord	0161 633 4519	brian.lord@oldham.gov.uk

UPPERMILL WARD

Councillor Mr. Robert Birse	01457 875487	tony@saddleshworthparishcouncil.org.uk
Councillor Mrs. Alma McInnes	01457 876425	imci34@btinternet.com

Clerk of the Council Mr Tony Marlor tony@saddleshworthparishcouncil.org.uk

Saddleshworth Parish Council Offices

Civic Hall, Lee Street, Uppermill, Saddleshworth, Yorkshire, OL3 6AE

Telephone: 01457 876665

Fax: 01457 872929

E-mail: enquiries@saddleshworthparishcouncil.org.uk

Saddleshworth Parish Council was formed during the local government reorganisation in 1974. Its boundaries are essentially the same as those of its predecessor, the Saddleshworth Urban District Council.

The Council achieved Quality Parish Council Status in June 2005, This recognises the way that the Council operates and enables it in co-operation with Oldham Council to assume responsibility for some services within the Saddleshworth Area, currently undertaken by the

principal authority. The Council meets monthly, usually on the fourth Monday of the month at the Civic Hall in Uppermill, the meetings commence at 7.30 p.m. and are open to the public.

The Parish Council is a member of the Saddleworth and Lees District Partnership, working closely with Borough Councillors and other partners on issues affecting Saddleworth and Lees. The District Partnership has funding available to support local needs. The aim of the Borough Council, which allocates the funding to the District Partnership is for the Partnership to work to meet local needs which are prioritised with Partners and the local community.

The Parish Council maintains the Civic Hall and Parish Cemetery. It has a number of Committees and Sub-Committees to conduct the Council's business, some of these are now joint sub-committees incorporating representatives from the District Partnership.

The activities of the Council are funded through a precept included in the Council Tax collected by Oldham Council, the precept for 2010/2011 for a Band D property is £17.90 per annum.

Planning and Development

The Parish Council is a Statutory consultee on all planning applications in the Saddleworth area. The Planning Committee consists of all twenty councillors and usually meets on the first Monday of each month. The meetings are open to the public, details of the applications to be considered at the meeting are available at the Council offices and on the Parish Council website.

Copies of the Plans, for each application, are available for inspection at the Council offices from noon on the day of the meeting. The recommendations of the Parish Council are considered by Oldham Planning Committee who are responsible for making the decision on each application.

Members of the public may, on application to the Clerk of the Council, at least one working day before the meeting, speak for, or against a particular application.

The Conservation Areas Advisory Committee meets before each Planning Committee meeting. The Committee is made up of local people with an interest in, and knowledge of, Saddleworth. They consider all planning applications for listed buildings and those in the Conservation areas. Their recommendations are discussed at the Planning Committee.

The Council continues to be heavily involved with Oldham Council in the development of the Local Development Framework Core Strategy and Development Control Policies that will replace the current Unitary Development Plan.

Environmental Issues

The Environment Sub-Committee, which includes representatives from the District Partnership deals with issues across Saddleworth and Lees.

A Community toilet pilot scheme has been developed in Saddleworth to provide clean, safe and accessible public toilets for residents and visitors to the area. The sub-committee is also working with Oldham Council and the Greater Manchester Waste Disposal Authority to identify ways of increasing recycling in the area.

Transport and Traffic

The Traffic and Transport Sub-Committee was formed in May 2008. It deals with a range of issues including parking, highways maintenance and public transport. In December 2008 it expanded to include District Partnership representatives. The Sub-Committee also includes community representatives from the area, Greater Manchester Police and Oldham Council Highways Department.

Affordable Warmth

The Affordable Warmth sub-committee first met in January, 2009. Initially called the Fuel Poverty Group, its name was changed in June, 2010 to accord with the strategic group in Oldham Council looking at the same issue.

The aim of the group is to inform residents of various grants to which they are entitled to keep their households warm. Referrals are made through the Energy Saving Trust.

Fuel poverty for a household is defined as one which has to spend more than 10% of its income to achieve a healthy and comfortable temperature of between 18 and 21 centigrade in all main living areas. A well-established national formula has estimated about a fifth of Saddleworth residents could be “in fuel poverty” for various reasons.

Special Projects

The Special Projects Sub-Committee is responsible for the Saddleworth in Bloom and Saddleworth Illumination competitions. It also funds the supply of Christmas trees to be displayed on commercial premises across Saddleworth.

The Sub-Committee also makes donations to a number of causes throughout the year. These included: Delph Youth Band, Delph Community Association, Churches Together, Saddleworth Chamber Concert, Winter Wonderland, Delph Senior Citizens, Diggle Blues Festival, and the Underground Youth Project. If you feel your organisation could benefit please apply in writing to the Clerk of the Council at the Civic Hall in Uppermill, enclosing a copy of your latest statement of accounts.

District Partnership sub-groups

Parish Councillors are members of the District Partnership Health and Wellbeing and Youth sub-groups

Civic Hall

The Civic Hall was originally built as the Mechanics Institute in 1859, it has been substantially renovated in recent years and further work is planned to enhance the facility for the benefit of users and the community.

The building houses the administrative offices for the Council and has a Ballroom with bar, two smaller halls and a catering kitchen. The venue regularly hosts wedding receptions, dinners, presentation evenings, conferences and concerts. It is also licensed for marriage and civil ceremonies.

For further information about availability and cost please contact the Civic Hall staff on **01457 876665** or by e-mail enquiries@saddleworthparishcouncil.org.uk.

Cemetery

The cemetery was opened in 1986 after being architecturally designed to take into consideration the long-term impact due to its commanding position overlooking the Saddleworth Countryside.

The site occupies a west facing hillside position on marginal land between enclosed pasture and open moorland. The Parish Council believes that the site must ultimately perform as a public open space for the enjoyment of local residents and hill walkers in addition to its primary function as a cemetery.

The Cemetery also includes a “woodland” or “green” burial site, this was opened in 1996 and was voted “Best Woodland Burial Site in the North West” in 2000 by the Natural Death Centre.

During the last twelve months there have been sixteen burials at the Cemetery and nineteen graves purchased for future use. The Cemetery also includes a Memorial Garden for the Interment of Ashes. For further information about the Cemetery please contact Tony Marlor, Clerk of the Council at the Council Offices on **01457 876665** or by email: tony@saddleworthparishcouncil.org.uk.

Visitor Information Centre

In April 2008 the Parish Council stepped in to help save the small tourist information shop based in the Museum in Uppermill. The survival of the award winning centre was seen as essential for the long term prosperity of the museum and tourist businesses in Uppermill.

The Council worked in partnership with Oldham Council and the Museum staff to ensure that visitors continued to receive a high quality service. The Parish Council is continuing to provide financial and staff support to the service.

A Big Thank You

We would like to thank all those who have contributed to the magazine, both contributors and advertisers.

Once again the Royal Mail are delivering 13,500 copies of this magazine across Saddleworth. The postcode areas differ from the Parish Council boundaries, if you know anyone who has not received their copy please let them know that extra copies are available from the Council Offices and the Visitor Information Centre at the Museum in Uppermill

The Council also produces three newsletters during the year, these are available from the Council offices, Visitor Information Centre and Libraries. If you or your organisation has information that you would like to share with the rest of Saddleworth please contact us on **01457 876665** or by e-mail enquiries@saddleworthparishcouncil.org.uk.

Alexander Ray C.M.B.H.I.



Watch and Clock Repair Specialists



*High quality repairs
All leading brands
Local pick up by appointment
Over 30 years experience
All north west areas covered*



Telephone 07831 458837 and ask Alex for further details
P.O. Box 540, Grains Bar, Saddleworth, OL1 9BZ

www.alexanderray.co.uk



From 29th March 2010 a Community Toilet Scheme will operate in Saddleworth.

The Scheme, developed by Saddleworth Parish Council, Saddleworth and Lees District Partnership and Oldham Council Street Scene, provides clean, safe and accessible public toilets in more locations for residents and visitors to the area. Businesses allow members of the public to use their toilet facilities free of charge during normal opening hours and without the need to make a purchase. Participating premises display a sticker indicating that they are participating in the scheme.

The following businesses will be participating in the scheme:

Saddleworth Craft Co-operative, Delph
The Rams Head, Denshaw
The Swan, Dobcross
The Diggle Hotel, Diggle
The Royal George, Greenfield
The Three Crowns, Scouthead
The Little Shop, Uppermill
Granby Arms, Uppermill
The White Hart Inn, Lydgate

For further information contact Tony Marlor at the Parish Council on **01457 876665**

JUSTIN BROWN JOINERY



Time Served Qualified Joiner
 Greatly Experienced
*All aspects of Joinery
 and Building work undertaken.*
 Please visit our website for more information.

www.justinbrownjoinery.com

01457 810646

Mobile: 07951 695650



*OUTSIDE AND
 EVENT CATERERS*



RAVENSTONE CATERING SERVICES

Tel: 01457 870458

Mobile: 07889 014254

FOR AN INDIVIDUAL QUOTATION

CELEBRATION PARTIES
 OFFICIAL DINNERS
 BUFFETS
 POTATO PIE SUPPERS
 ANY OCCASION CATERED FOR
 BARBECUES AND HOGROASTS
 a speciality



*CATERING TO
 MEET YOUR NEEDS*



Saddleworth & Lees District Partnership

The Saddleworth & Lees District Partnership is the devolvement of powers to local areas allowing them to make decisions on priorities and how funds are spent in their area. It is made up of 9 Borough Councillors, 7 Parish Council representatives, 2 representatives from Lees, the Neighbourhood Police team and other agencies when appropriate. The meetings are held in public and the public are welcome to come along. The public can submit questions to the Partnership in writing at least 2 working days before the meeting and then come to the meeting and ask them. However the main community engagement is the PACT (Partners and Communities Together) meetings which take place in a different village each month to coincide with the 'Village a Month' programme. Here members of the public can talk to local Councillors, representatives of the Neighbourhood Police Team and council officers about their concerns. Indeed from an extremely shaky start the PACT meetings and the 'Village a Month' initiatives have become an effective way of engaging with communities and following up their concerns and suggestions.

Projects and issues which are under way or have been completed in 2009/2010 (working with partners):

Allotments: moves to establish allotments in Uppermill, Denshaw and Grotton

RSPB: consultation over the plans for Dovestone

Tourist Bus: Joint (Parish & Partnership)Traffic and Transport sub group have led on this one. It will run until 26th September on Saturday & Sunday and Bank Holiday

Community Toilets: Money has been put into the scheme being led by the Parish Council and the pilot project has been launched with 8 establishments taking part.

Health Sub Group: A joint piece of work is being done with NHS Oldham to look at the health needs of local residents and to look at smart ways of bringing health services to rural districts

Churchill Playing Fields Working Group: The working group is established and is meeting on a regular basis to draw up plans to resolve the long running issue of poor drainage of Churchill Playing Fields

District Plan: Questionnaires have been collected from Lees and raw data gathered. The first draft of the plan has been completed. The first draft of the S&L District Plan has also been completed and a workshop is being held to look at this.

Grot Spots: are being identified and cleaned up

Hand Pavement Gritters: Deployed in December and early January to volunteers but the volume of snow somewhat overtook them! An analysis of the project is being done

Gateways: work is ongoing with OMBC Street Scene, Highways and street lighting to improve the appearance of the main routes into the Borough

Vehicle Activated Signs: have been installed to improve safety near schools and dangerous junctions

Off Road Bike Signs: are on order and will be put up as soon as they arrive.

Dawson's Field, Scouthead: Issues with the Band Contest resolved and the field can now be used for community events

Grit bins: to be investigated further

Dragons Den: is being planned by the Youth Sub Group in conjunction with the integrated Youth Service and Youth Forum

Christmas lights: were extended to Springhead, Greenfield and Diggle and previous ones were lit up again

Summer planting: has been extended to four more sites and others renewed

Youth Only Zone: a great success which has been extended and given more funding to increase the range of activities on offer for a wider age range

Red Telephone Boxes: a project being led by the Parish Council. Some funding given

Milestone Project: to repaint the old milestone posts in Saddleworth & Lees

Local groups/projects who have been helped financially:

Springhead AFC

Lydgate Clock repairs

Lees Historical Group

Chapel Gardens Delph

GGRA Street Scene Pavement Project

Oldham Mountain Rescue Team

Brownhill Food Festival

Diggle Jazz & Blues Festival

St Marys Gardening project

St George's Day Art & Craft Project

Saddleshworth Olympics

Uppermill Band Committee

Barbara Beeley (Cllr)

Chair Saddleshworth & Lees District Partnership

R.S.P.B.

The RSPB finally signed the lease at Dove Stone on 1st April and the past few months have been a busy period for us as we start to go operational on site. One of the first jobs has been to invest time and money in solving some of the anti-social issues affecting this beautiful area. We have established a regular litter picking contract all the way around the reservoir and we hope you have all noticed a much reduced litter problem on the site! We have also, thanks to generous support from the District Partnership installed a number of dog poo bins, which we hope will reduce the amount of poop you encounter!

At Binn Green, the chemical toilets have had a general overhaul and clean up including the installation of fans and composting material. We have also introduced an electronic barrier system to lock this car park at night to combat some of the more nefarious activities that take place here. To help fund this work, the Binn Green car park has been made pay and display, with all income generated being ploughed back into visitor improvements on site. Unfortunately, this has not been appreciated in some quarters and a spate of thefts and vandalisms have occurred around the car park. We are now investigating a new system of security measures which could be introduced.

Down at Dove Stone we are now operating a daily staff presence from Thursdays through to Sundays where staff are running a range of events for families to help them engage with the wonderful range of wildlife present on this site. This includes a watch on the peregrines at Ashway Gap where staff are present to show people the birds through a range of telescopes. The great news here is that four big healthy chicks were hatched in early June. Staff are also manning a new, decorative interpretation gate at the western end of the car park which is closed at weekends to reduce traffic onto "the beach area" around the Sailing Club buildings.

On the wildlife front we have been undertaking a full survey of birds breeding on the moorlands and early indications are that the work to re-vegetate the vast areas of formerly bare peat is paying dividends for special moorland birds like dunlin and golden plover. We have also been working with groups of volunteers and Duke of Edinburgh Award working groups to begin replacing some of the conifers with native trees and to transplant rare insectivorous Sundew plants from drains around the reservoir onto safer locations on the moorlands.

There is loads of work to do at Dove Stone and we are always on the lookout for volunteers to get involved, if you are interested then please contact Kirsten Whittaker at the RSPB regional office on 01484 861148.

Roy Taylor

RSPB Peak District Reserves Area Manager

Saddleworth In Bloom

RESULTS 2010



Container Garden

- | | | |
|-----|-------------------|-----------------------------|
| 1st | Helen Hall | Church Street, Delph |
| 2nd | Mrs Ann Smith | Platt Lane, Dobcross |
| 3rd | Mr Richard Dawes | Oldham Road, Springhead |



Small Garden

- | | | |
|-----|--------------------------------|-----------------------------------|
| 1st | Mr. Edward. Butterworth | Wimberry Close, Greenfield |
| 2nd | Mrs Dawn Finnegan | Bridge Street, Springhead |
| 3rd | Mr Paul & Mrs Pamela Davies | Huddersfield Road,
Austerlands |



Medium Garden

- | | | |
|-----|-------------------------------|----------------------------------|
| 1st | Mr. Thomas Adamson | Burnedge Lane, Grasscroft |
| 2nd | Dr Eamon & Mrs Pauline O'Daly | Church Road,
Uppermill |
| 3rd | Mrs Christine Fish | Kinders Lane, Greenfield |



Large Garden

- | | | |
|-----|--|-----------------------------|
| 1st | Mr. Harry & Mrs Val Pinkerton | The Nook, Greenfield |
|-----|--|-----------------------------|



Best Community Garden

- | | | |
|-----|----------------------------|---------------------------------|
| 1st | Mrs. Sheila Cronley | Beech Avenue, Greenfield |
| 2nd | Michael Marsh | Shady Vale, Church Street |



Best Blooming Pub

- | | | |
|-----|-------------------------|---------------------------------|
| 1st | The Old Bell Inn | Huddersfield Road, Delph |
| 2nd | The Hanging Gate | Huddersfield Road, Diggle |
| 3rd | The Railway Hotel | Shaw Hall Bank Rd, Greenfield |

The judges were Parish Council Chairman Councillor Keith Begley, local gardening expert Frank Ashton and members of the Special Projects sub-committee.

MILLYARD GALLERY

Fine Art, Sculpture, Ceramics, Etchings,
Oils, Watercolours, Prints

Saddleworth Picture Framing

A quality, bespoke framing service

97 The Square, Uppermill OL3 6BD
Tel: 01457 870410

www.millyard-gallery.co.uk

Member of The Fine Art Trade Guild
& The Guild of Master Craftsmen

POST OFFICE™ UPPERMILL POST OFFICE

TEL: 01457 872100

Open: Mon - Fri 9am - 5.30pm Sat 9am - 12.30pm



FOREIGN CURRENCY
NO COMMISSION AT THE POST OFFICE
**EUROS & US DOLLARS
NOW IN STOCK**

TRAVEL INSURANCE
PASSPORT
PHOTOGRAPHS



CAR TAX DISCS
MOBILE PHONE TOP UPS

PERSONAL BANKING WITH



LLOYDS, CO-OP, BARCLAYS
ALLIANCE & LEICESTER &
NATIONWIDE



**OPEN TILL 7PM
WED & SAT FOR LOTTERY**

Pogson & Armitage Limited

Funeral Directors in Saddleworth

In association with G. Barlow & Sons Limited



Telephone: 01457 872149
24 Hour Service
Private Chapels of Rest
Car Park
Pre-Payment Plans Available

53 Huddersfield Road, Diggle
Saddleworth OL3 5NT

The Saddleworth Parish Plan

"We saidwe did." In December 2009 we published your aspirations and our commitments for Saddleworth. Since then the Parish Council has endeavoured to keep those promises.

Actions already completed:

Environment - A combination of lobbying and liaising with Oldham Council Highways Department has seen a number of important amendments to original plans, resulting in Drystone wall construction taking precedence over reinforced concrete walls faced with mortared stone cladding.

Employment – we have launched a new website, www.saddleworthparishcouncil.org.uk to help promote Saddleworth, not only as a place to visit and live but also as a place to work, with emphasis on the 'High Tech' industries.

Tourism - we agreed there was a need for a transport link between Greenfield railway station to both the Dove Stone attractions and Uppermill. The "Saddleworth Hopper" service is operating at weekends to the end of September. Instigated by the Parish with additional funding from Peak Park, Pennine Prospects, RSPB and the District Partnership.

We have also launched a pilot Community Toilet scheme. This will help to address a long overdue need and we shall be monitoring the scheme with a mind to extending it further.

A tourist map of the Saddleworth area is being prepared by the Parish Council with assistance from Oldham Council.

Leisure Activity - the saga of Churchill playing fields and its shortcomings continues, but new impetus has been brought to bear by the Parish Council via the District Partnership, which has no illusions about the need for its problems to be resolved once and for all. The D.P. is actively working with various agencies to find a permanent solution. A much needed and overdue improvement to the play facilities in Delph has been completed via the Borough's Playscape project. The Parish Council has also been involved in partnership working to meet the needs of older children.

Law and Order – after requests from the Parish Council the Police will maintain the advertised opening hours of Uppermill Police Station.

Health and Wellbeing – a new NHS dentist has recently opened in Uppermill. The Parish Council continues to work through the District Partnership to improve health facilities in the area.

Ongoing – The Parish Council will continue to work with Oldham Council on the content of the Local Development Framework which will set out the Planning policies and land usage for the area.

Cleaning road signs, grot spots and tackling overgrown vegetation.

Rochdale United Charities

Saddleworth Parish Council has a place on the Board of Rochdale United Charities. This charity gives grants to people in need who live in the area of the Ancient Parish of Rochdale, including Saddleworth. Although Councillor Brian Lord has travelled monthly to their meetings for the last 14 years there have been no requests from Saddleworth residents.

Most of the requests are for fridges, cookers, beds washers etc and they have to be sponsored by a social worker, doctor's surgery, voluntary society official or councillor. For more information please contact Tony Marlor at the Parish Council Offices on 01457 876665.

Saddleworth White Rose Society

During the past 12 months the White Rose Society has made spectacular progress in achieving recognition of our true county and the continued existence of the true county boundaries of Yorkshire and Lancashire (contrary to popular belief, unchanged in 1974). The Boro Council have erected inter village boundary signs which state the fact that Saddleworth is in the Historic West Riding of Yorkshire, they have also decided to fly the Yorkshire flag on Yorkshire Day 1st August from the Boro Civic Hall in Oldham and the Lancashire flag on Lancashire Day 27th November. With the approval, support and co-operation of the Boro Council we have also erected the first two of several Real County Boundary signs. We still have several more to erect and have had some very generous donations towards the cost of these. However, as the cost will be quite considerable we are accepting donations towards this project from all who are proud of their county heritage, be it Yorkshire, Lancashire or any real county, it applies equally. The boundaries of all real counties have been brought into question over recent years. And, although the government have continued to make it clear that the traditional county boundaries were neither moved or changed in any way, local authorities throughout the country, and the local and national media have continued to feed the public misleading information. For example, referring to Rochdale, Greater Manchester rather than Rochdale, Lancashire.

Greater Manchester, although designated a county is in fact nothing more than a former administrative area whose powers lasted a mere 12 years.

Anyone wishing to donate towards the True County Boundary signs should make cheques payable to Saddleworth White Rose Society and forward to Mrs Norma Gregory, SWRS Treasurer, 10 Court Street, Uppermill, Saddleworth, Yorkshire OL3 6HD

Photograph courtesy of Ralph Oakes-Garnett



Saddleworth White Rose Society in the County of York

Patrons Baroness Mallalieu QC Mr Roger Tanner MBE Mr Phil Woolas MP

“The new county boundaries are for administrative areas and will not alter the traditional boundaries of counties, nor is it intended that the loyalties of people living in them will change. While the (new) names apply to the districts defined for local government purposes, they do not supersede existing place names”.

– Government statement 1974.

Recognise your true County. Join us!
The Saddleworth White Rose Society

Details from Roy Bardsley 01457 878768

www.whiterose.saddleworth.net Email: whiterose@saddleworth.net

Saddleworth & Lees Safety Committee

The Saddleworth and Lees Safety Committee is a voluntary group whose aim is to promote safety awareness around Saddleworth and Lees with special emphasis on young children in local primary schools.

The Committee comprises three Officers; the Chairman, Mr. David Caddick, Secretary Cllr. Bill Cullen and Treasurer, Mrs. Kath Angove, together with seven others. All work on a voluntary basis.

At present we are financially viable, but are always seeking further financial assistance from such sources as grants, the Saddleworth Parish Council Chairman's Charity, the Oldham Mayoral Appeal or donations from anybody who has an interest in improving safety awareness, especially for children. We hold coffee mornings and are available for talks and quiz sessions in the area for any organisation, when a small donation is acceptable.

The major showcase for the committee is the Annual Safety Exhibition at the Civic Hall,

Uppermill. All the primary schools in the Saddleworth and Lees area are invited to attend over a four day period, with a selection of stands representing the Police (PCSO), Litter, Peak Park Rangers, Firework Safety, Fire Brigade, Food Hygiene, Road Safety, the Parish Council's Environmental Sub-Committee and Groundwork

A very successful event was held in October 2009 and the 2010 exhibition will be held from 18th October – 21st October.

The Annual Safety Quiz, the other major project undertaken by the committee, is to be held in March 2011. Again all primary schools in the area are invited. It will start at 7.00pm and the general public are invited. Certificates and trophies will be presented at the end of the evening.

For any further information you can contact any committee Member or myself on 01457 870668.

J. David Caddick, *Chairman, Saddleworth & Lees Safety Committee*



Holme Computer Services (UK) Ltd.

For all your business IT requirements, supplying:

- *HP Servers and Printers*
- *HP PC's and Notebooks*
- *Cisco, Netgear, D-Link Routers and Switches*
- *Network Design & Implementation*

Tel: 01457 877979

Email: ian@hcs-uk.com www.hcs-uk.com

Unit 14, Gatehead Business Park, Delph New Road, Delph OL3 5DE

Hawkyard & Whitehead Educational Foundation

Hawkyard & Whitehead Educational Foundation is a Registered Charity founded over 200 years ago by R.H. and W.N. Hawkyard to aid families in Saddleworth. The Committee meets twice every year in April and October.

Awards are given for named children from families in financial difficulties. Any child between the inclusive ages of 4 years and 16 years, resident in Saddleworth and attending school (except nursery school) in Saddleworth is eligible.

All requests are handled in total strict confidence. The awards are for specific educational purposes, e.g. uniforms, clothing, school trips, equipment or help with music or sports scholarships.

Applications for awards must be addressed to the Committee in writing : they can be sent to the Secretary to the Trustees Mrs. M. Taylor, Rosewood, Rose Hill, Delph, OL3 5ED, the Chairman of the Trustees Councillor Mrs. Alma Mcinnes, Flat 34, Alexandra Mill, Mill Street, Uppermill, OL3 6NA ; the Head Teacher of the school the child attends, or to the Saddleworth Parish Council Offices, Civic Hall, Lee Street, Uppermill. Applicants must give reasons for applying.

WHITEHEADS

OF SADDLEWORTH LIMITED

GENERAL PRINTERS & STATIONERS

◆
**FOR ALL YOUR
PRINTING
& STATIONERY
REQUIREMENTS**
◆

94 High Street, Lees, Oldham OL4 5AA
Tel: 0161-626 1942 Fax: 0161-626 4435

JOHN BARNES ARCHITECT

--
**ALL ASPECTS OF
ARCHITECTURAL WORK
UNDERTAKEN**

--
Residential
Commercial
Industrial

--
**Moordale Paddock
Huddersfield Road Diggle OL3 5NT
Tel 01457 873373 Fax 01457 871744
e-mail: john.barnes@member.riba.org**



Greater Manchester Police



Inspector
Danni Milovanovic



Sgt
Craig Johnson

There is good news in that Crime and Anti Social Behaviour continue to fall, which builds on the success of last year.

Since 1st April 2010, Serious Assault and Harassment is down by more than 50% in comparison to the same period last year, and there have also been 16 fewer house burglaries.

Recent arrests have been made in relation to house burglaries with property being recovered.

Anti Social Behaviour, which is frequently the greatest concern for residents, is also well down on last year, with Youth Related Incidents, and reports of Rowdy and Inconsiderate Behaviour showing healthy reductions.

Operation Divert continues, an initiative aimed at tackling Anti Social Behaviour, which commenced at the start of the 2010 Calendar year.

There are many strands to Operation Divert, which includes encouraging School children and youths to become involved in positive activities, including Football and Dance.

This is a Partnership led initiative, made possible with District Partnership funding, and other agencies such as the Integrated Youth Scheme, Detached workers and Police working together to ensure there are alternatives to becoming involved with ASB.

The Partners continue to look at ways of improving youth engagement in the

Neighbourhood, and Alternative Sport Activities may be piloted in the near future.

The Police have run "Gateway Operations", an initiative launched in conjunction with First Bus allow officers to carry out routine patrols on buses travelling in to Saddleworth, particularly on Friday evenings. Alcohol has been seized from youths travelling on buses, which has prevented alcohol fuelled disorder later in the evenings.

Learning mentors from Saddleworth School have joined the Police on patrol on Friday evenings, and Councillor Barbara Beeley has also been out working with the Police and partners involved.

At the recent Private Hire Licensing Forum, an agreement was secured with Operators for the Police to routinely stop and check cars travelling into Saddleworth if we feel youths may bringing alcohol into the area.

The Police have also worked closely with the Council's Anti Social Behaviour Team, and a recent application was successful in relation to the granting of an Anti Social Behaviour Order for a 16 year old boy, who's conduct was causing quality of life issues for residents.

We will continue to work hard in trying to deliver further reductions, and making your Neighbourhood safer.

Inspector Danny Milovanovic,
Saddleworth and Lees NPU

Greater Manchester Police

Saddleworth North



P.C.
Mark Clough



P.C.
Dave Hulme



P.C.S.O.
Cath Crompton



P.C.S.O.
Monica Seville

Saddleworth South



P.C.
Dave Pickles



P.C.
Jonathan Marsden



P.C.S.O.
Lorna Conway



P.C.S.O.
Lee Lockwood



P.C.S.O.
Wayne Turley

Saddleworth West & Lees



P.C.
Steph Dalpiaz



P.C.
Matt Gant



P.C.S.O.
Jennifer Ballagher



P.C.S.O.
Mark Detheridge



P.C.S.O.
Mike Lowther



P.C.S.O.
Rachel Stead

Office Number **0161 856 4524**.

Voicemail facility at the office if unable to answer phone.

In an emergency contact 999. Non emergency 0161 872 5050



Saddleworth Parish Council Income & Expenditure Account Year Ended 31st March 2010

INCOME		
PRECEPT	£176,350.80	
CIVIC HALL CHARGES	£40,769.39	
CEMETERY CHARGES	£14,834.50	
CIVIC BALL	£5,270.19	
GRANTS & CONTRIBUTIONS RECEIVED	£1,096.50	
NEWSLETTER ADVERTISING	£645.00	
MISCELLANEOUS INCOME	£127.50	
EXPENDITURE		
ADMINISTRATION		
SALARIES		£48,584.48
PRINTING & STATIONERY		£1,874.10
PUBLICITY & PROMOTION		£1,272.70
POSTAGE & TELEPHONES		£1,204.20
INSURANCE		£6,162.66
AUDIT FEE		£1,385.00
OFFICE EQUIPMENT		£1,320.23
VISITOR INFORMATION SERVICE		£4,500.00
CHAIRMAN'S REGALIA		£305.50
CONSULTANCY		£1,567.17
PARISH PLAN		£2,947.29
SADDLEWORTH HOPPER BUS		£429.00
MISCELLANEOUS		£1,410.35
CIVIC HALL		
SALARIES		£51,869.83
HEATING & LIGHTING		£13,845.08
GENERAL & WATER RATES		£20,411.49
CLEANING MATERIALS		£1,387.50
REPAIRS & RENEWALS		£9,153.33
REFUSE COLLECTION		£1,164.29
CIVIC HALL MODERNISATION		£33,423.89
PREMISES LICENCE FEE		£295.00
CEMETERY		
GRAVE DIGGINGS & BURIALS		£6,626.20
RATES & MAINTENANCE		£2,760.68
SPECIAL PROJECTS		
GRANTS & DONATIONS		£2,600.00
SUMMER & CHRISTMAS EVENTS		£1,620.69
NEWSLETTERS		£3,347.12
ENVIRONMENTAL IMPROVEMENTS		£2,191.00
NOTICE BOARDS		£708.30
CIVIC DUTIES		
CHAIRMAN'S ALLOWANCE		£1,750.00
CIVIC BALL		£5,260.49
TOTAL INCOME & EXPENDITURE	£239,093.88	£231,377.57
BANK INTEREST RECEIVED	£27.07	
SUB TOTAL	£239,120.95	£231,377.57
BALANCES AS AT 1ST APRIL 2009	£69,588.71	
BALANCES AS AT 31ST MARCH 2010		£77,332.09
TOTAL	£308,709.66	£308,709.66

PLEASE NOTE THE ABOVE FIGURES ARE UNAUDITED.

Specialist financial planning

**Investment
portfolios**

**Retirement
and pension
planning**

Estate planning

**Ethical
investments**

At Landmark Financial Planning we help our clients to plan for a rewarding and secure financial future. Our professionally qualified advisors listen carefully to provide the right financial advice to meet your personal and professional needs. All advisors at Landmark are **Chartered Financial Planners**.

To find out how we could help to make your financial future even more secure, talk to us today.



Landmark

**27 Sam Road, Diggle,
Saddleworth, OL3 5PU.**

Tel: 01457 870008

Email: landmark@landmarkfs.co.uk

Web: www.landmarkfs.co.uk

Landmark Financial Planning Limited is authorised and regulated by the Financial Services Authority